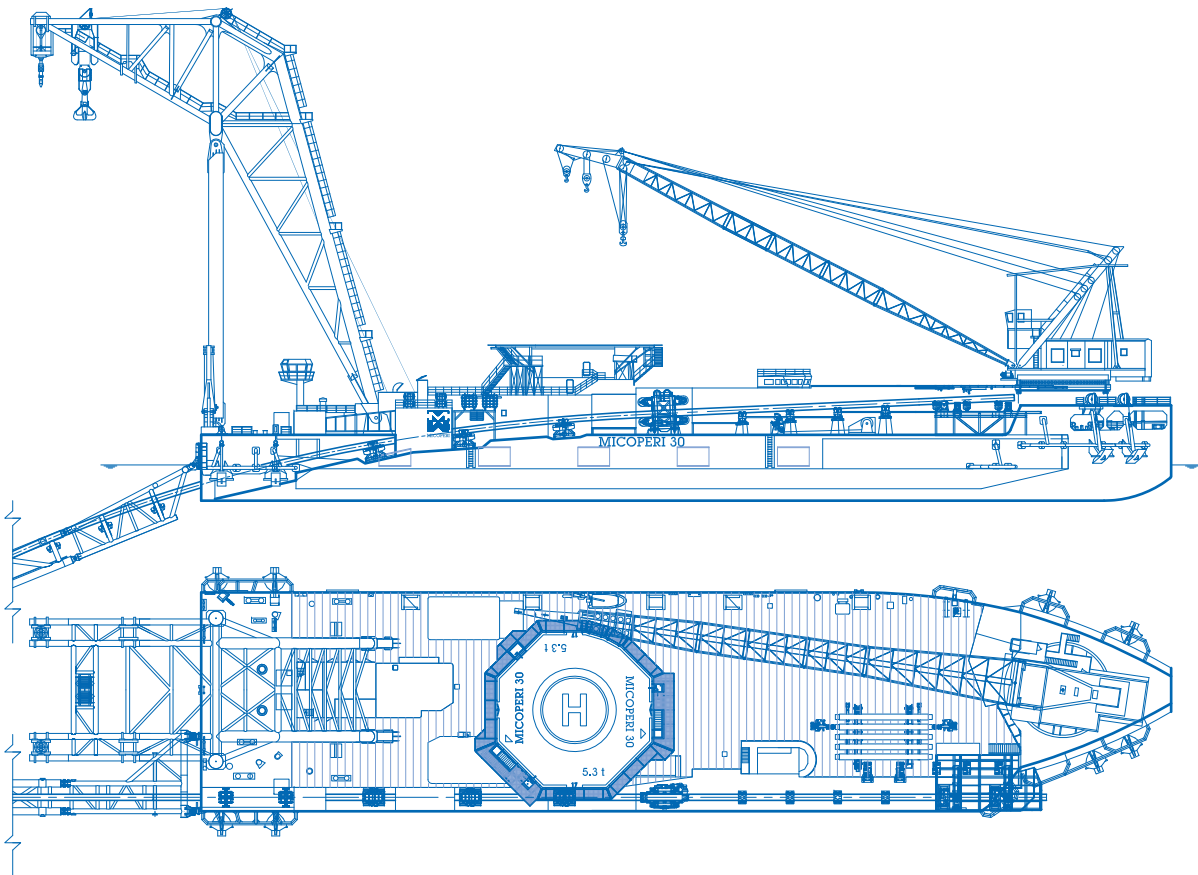




# MICOPERI TRENTA

DERRICK LAY BARGE



# MICOPERI TRENTA

## DERRICK LAY BARGE

MICOPERI TRENTA is a multi-purpose, SPS compliant, 10-point mooring lifting and laying barge, with 200 men accommodation facilities, rebuilt in 2008. With its 1270 t aft sheerleg crane, the unit is the perfect tool for the installation of medium-sized platforms.

The sheerleg main hook was also modified to reach 250 meters water depth at its full capacity.

The 204 t fully revolving Clyde crane (located on the bow) is able to service the entire deck area and is the ideal tool for piling operations, post installation platform ancillary works as well as supporting the platforms hook-up and commissioning phase.

The unit also has a modern firing line capable of laying pipes ranging from 4" to 32" with double piggy-back stations, making it ideal for infield interconnecting medium sized pipeline.



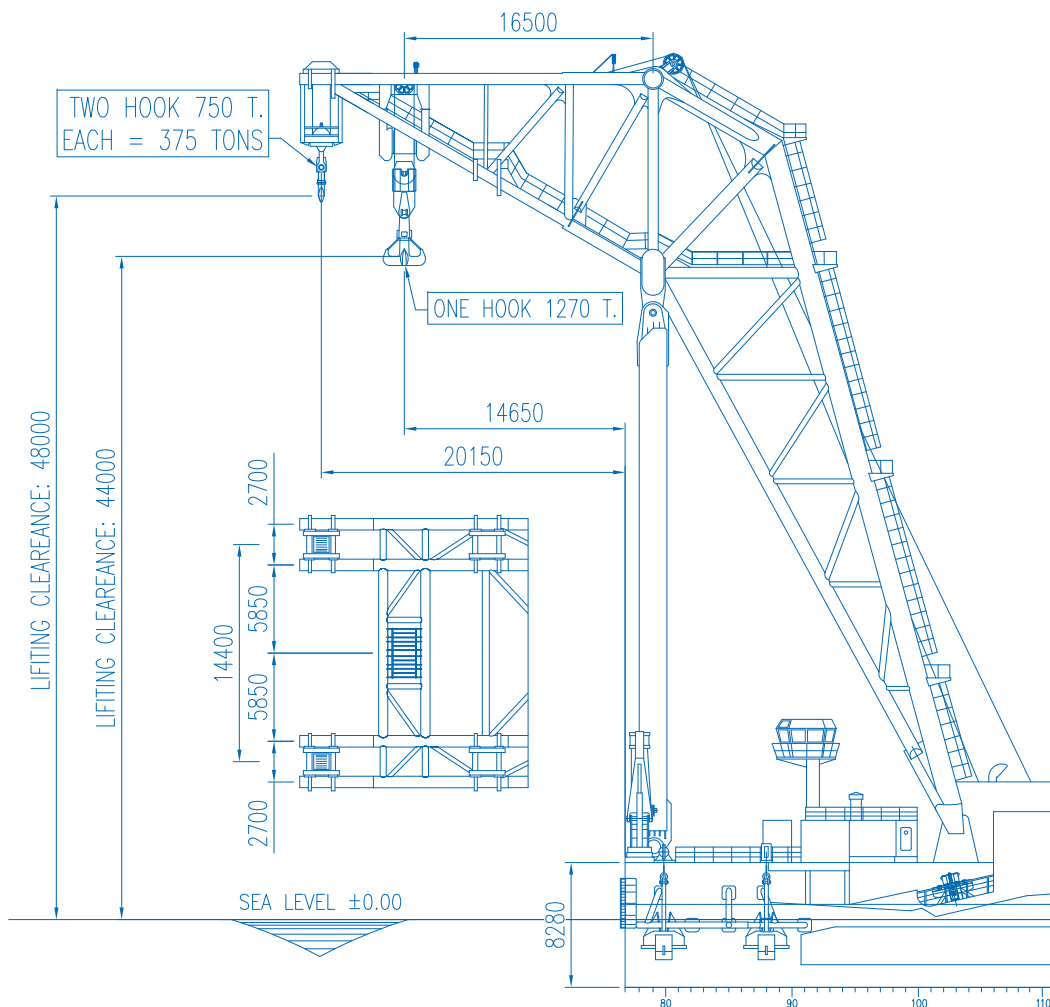
### MAIN DATA

IMO number	8757831
Gross tonnage	7764 t
Net tonnage	2329 t
Length overall	121.96 m
Depth	8.25 m
Breadth	27.54 m
Maximum draft	5.15 m
Class	Lifting and pipe laying pontoon
Registry of Classification	RINA
Additional notations	ELI
Flag	ITALY

### POWER GENERATION

Diesel generator	2 x GM 16 VA92 - 600 k V A - 380 V - 50 Hz 2 x MAN D2842LE301 - 725 k V A - 380 V - 50 Hz 2 x DEUTZ 16M816 - 1,000 k V A - 380 V - 50 Hz
Total electrical power	4650 k V A - 380 V - 50 Hz





#### NAVIGATION EQUIPMENT

Radar	Sperry Marine Vision Master FT
Gyro compass	Sperry Marine Navigat X MK 1
Echosounder	Sperry Marine ES 5,100
AIS	Jotron TR-2,500
GPS	Furuno GP-37
Navtex	Marac tel 100

#### ACCOMMODATION

Modern fully conditioned and heated accomodation as follows:

2 x 1 person	
2 x 3 persons	
26 x 2 persons	
36 x 4 persons	total: 200 pax
Hospital	1 x 4 beds
	1 x 1 bed (isolated cabin)
Mess room	1 x 80 persons

#### CAPACITIES

MGO	499 t
Fresh water	1365 m3
Fresh water maker	2 x 24 t/d

#### LIFTING EQUIPMENT

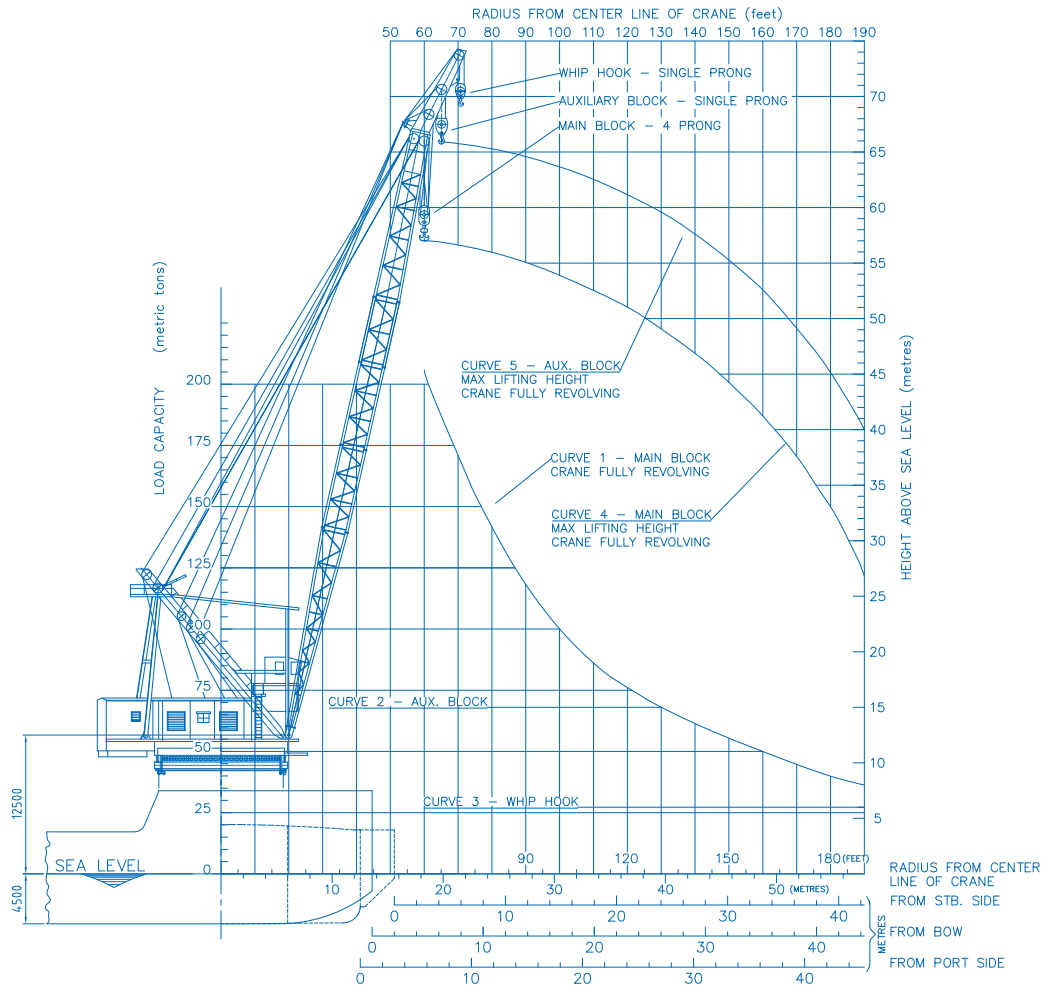
##### AFT

Type	Shear Leg Crane Main hook: 44 m @ 14,65 m OUTREACH PS Auxiliary hook: 48 m @ 20.15 m OUTREACH
Hook height	STBD Auxiliary hook: 48 m @ 20.15 m OUTREACH Main hook: 1,270 t PS Auxiliary hook: 375 t
Maximum load	STBD Auxiliary hook: 375 t

##### FORWARD

Type	Revolving Crane
Model	Clyde D37 Main: 57 m Auxiliary: 66 m Whip: 69 m
Hook height	Main: 204 t @ 18.28 m Auxiliary: 68 t @ 36.57 m
Maximum load	Whip: 27 t @ 57.91 m





### LAYING SYSTEM

Transversal trolley with shock absorbers	1
Beveling rack with beveling machines	2+1
Lowering/elevator device with shock absorbers	1
Conveyor system to convey the line pipes towards the barge bow	1
Transversal conveyor system	1
Line-up system	1
Welding stations equipped with automatic welding system	3
Pipeline roller supports	4
60 t pipe tensioner	1
NDT station	1
Line pipes track supports with load cells	3
Field joint station	1
Piggy back station	1
Pipeline adjustable roller supports	4
Stinger connection system	1
Rigid floating stinger	1

### MOORING EQUIPMENT

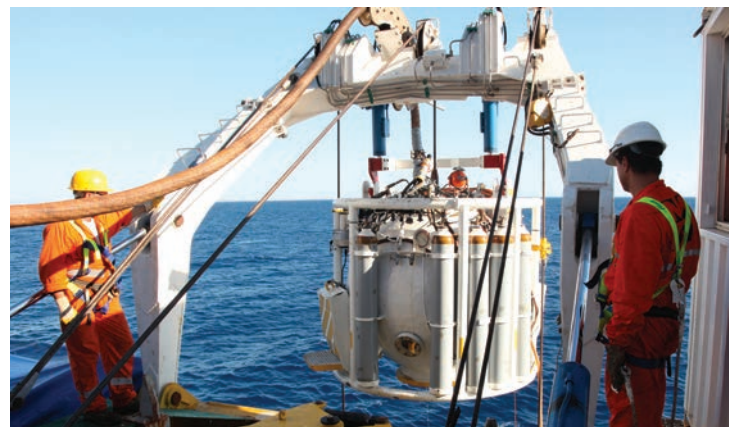
Anchor winches	5 x diesel hydraulic double drum
	2 x Skagit 65 t double drum with 1.500 m Ø 52 mm cable
FWD	1 x Smatco 55 t double drum with 1.100 m Ø 44 mm cable
AFT	1 x Skagit 65 t double drum with 1.400 m Ø 52 mm cable
Anchor s	10 x 9 t Delta flipper

### HELIDECK

Helicopter max rating	5.3 t
Class	H2
Helideck dimension	19.5 x 19.5 m (octagonal)

### COMMUNICATION EQUIPMENT

GMDSS	VHF - Sailor RT 502
V-SAT	Sea Vision
Inmarsat	Mini M TT Sailor
EPIRB	Sailor SE 406-II





HEAD OFFICE

Via Trieste 279  
48122 Ravenna IT  
tel +39 0544422252  
fax +39 0544423767  
info@micoperi.com  
www.micoperi.com

