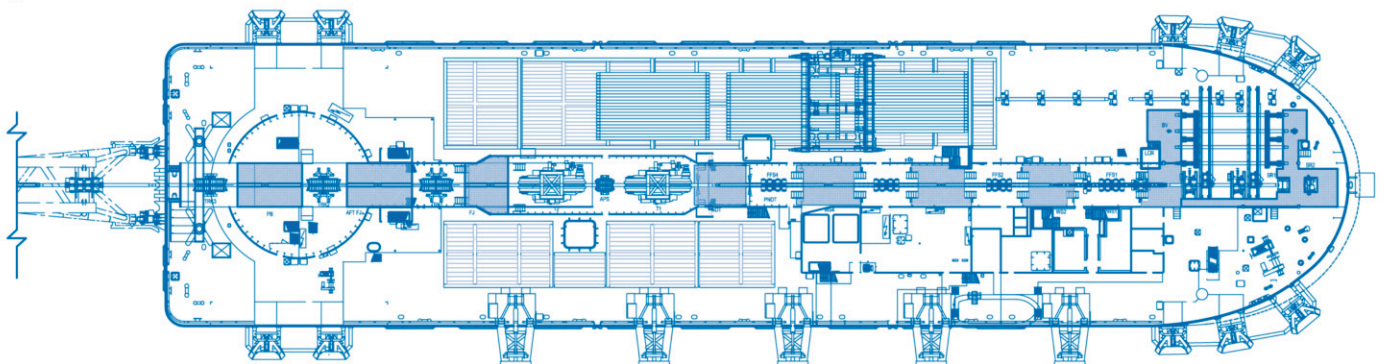
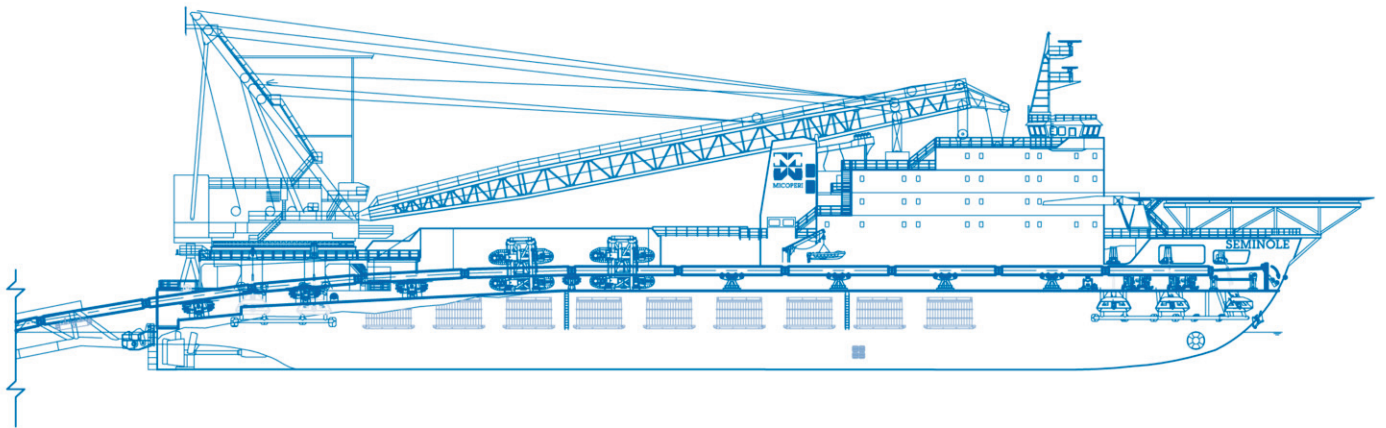




SEMINOLE

DERRICK LAY VESSEL



SEMINOLE

DERRICK LAY VESSEL

SEMINOLE, is one of the most versatile Self-propelled shallow water lifting and laying combination vessel in its segment of the offshore market.

The unit underwent an extensive rebuilding program which was completed in 2011.

The rebuilding was predominantly aimed on maintaining the vessel shallow water versatility enhanced by state-of-the-art pipelay technologies and compliancy with the latest Class, Safety and Comfort standards.

Its high pipeline tensioning capacity of 200 t combined with the shallow draft and the high sea keeping capability of the ship shaped hull makes SEMINOLE the perfect tool for large diameters pipelines ranging from shore approaches to relatively deep waters as well as intra-field pipelines where the 700 t revolving crane provides the capacity for structures installations both on platforms and subsea.



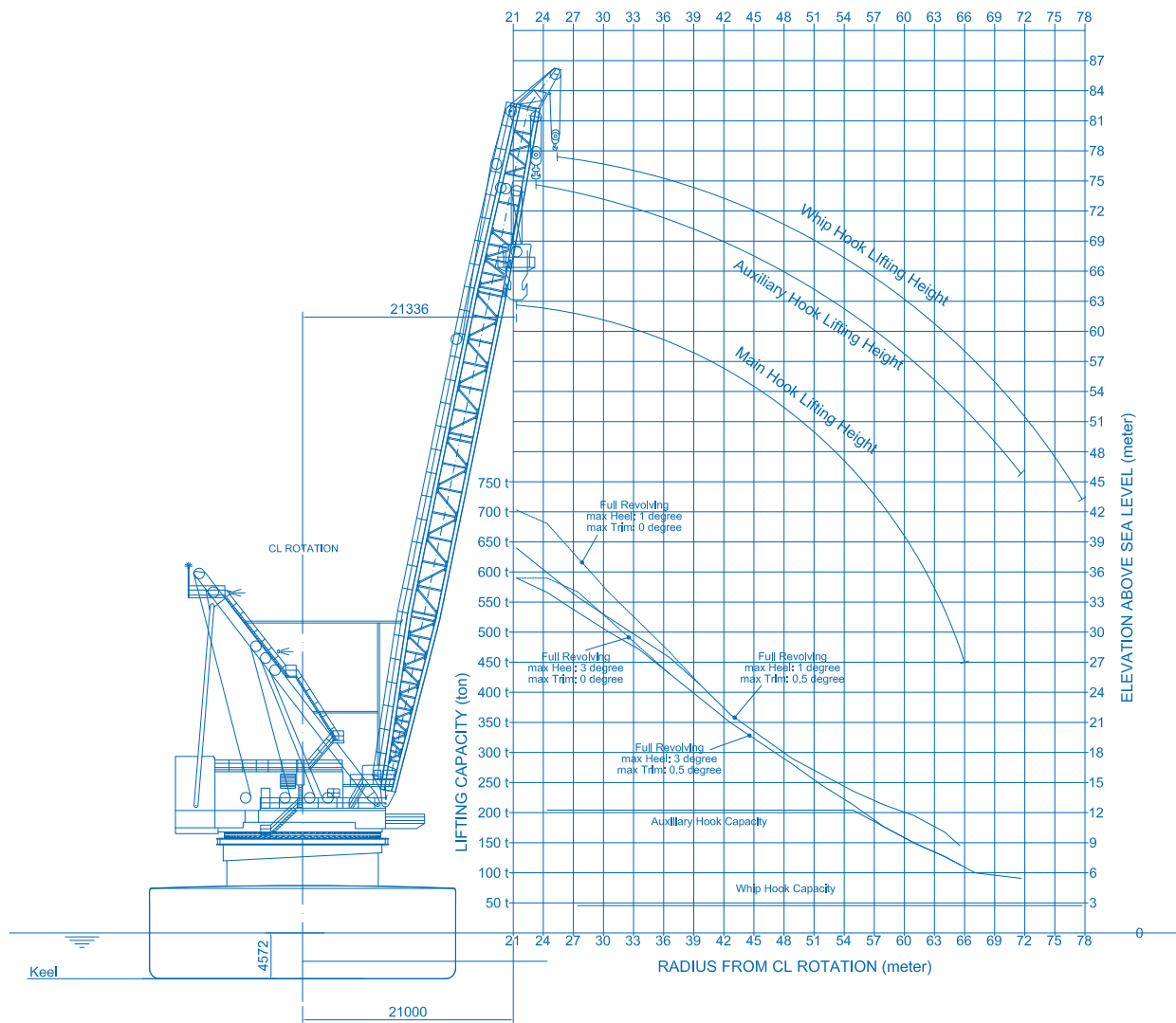
MAIN DATA

IMO number	7645550
Gross tonnage	13.871 t
Net tonnage	4.161 t
Length overall	135.81 m
Breadth	30.5 m
Depth	9.00 m
Minimum draft	3.08 m
Maximum draft (operational)	6.00 m
Maximum draft (sailing)	4.53 m
Max speed	7 kts
Consumption at 90% of power	18 t day
Registry of Classification	RINA
Class	Pipe laying unit; lifting unit; unrestricted navigation
Additional notations	HELIDECK; INWATERSURVEY
Flag	ITALY

POWER GENERATION & PROPULSION

Main engine type	4 x Pielstick 1560 kW, 1200 rpm
Electric generators	4 x CEM 1850 kVA - 5500 V - 60 Hz - 1200 rpm
Propulsion motors	4 x CEM, 1140 kW - 5500 V - 60 Hz - 1194 rpm
Bow thruster	Kamewa 588 kW - 892 rpm
Propellers	2 x Kamewa - variable pitch 4 blades in steering nozzle
Screw Diameter	2,500 mm





LIFTING EQUIPMENT

MAIN REVOLVING CRANE AFT

Model	Clyde - S52E
Hook heights	Main: 62.48 m Auxiliary: 70.10 m Whip: 77.72 m
Maximum load	Main: 703 t @ 21.34 m Auxiliary: 200 t @ 55.50 m Whip: 45 t @ 77.8 m

DECK CRANE (BOW ANCHORS)

Type	2 x Revolving Liebherr PBW 10/12
Max load	10 t @ 12 m

CAPACITY

MGO	1255 m3
Fresh water	1277,3 m3
Fresh water maker	2 x 60 t/d

FIRING LINE

Main line pipe range	4" to 36" max OD
Piggy-back lines	2 x max 4"
Tensioners	2 x 100 t Remacut
AR winch	1 x 200 t Remacut (whit instrumented sheave)

PIPE HANDLING SYSTEM

Overhead Gantry Crane (pipe feeder)	30 t SWL
Longitudinal conveyor	9 x motorized rollers MWL 20 t each
Transversal conveyor	2 x trolley with spinning rollers MWL 30 t each
Line Up Machine	2 x Conveying rollers 1 x Bead Stall roller 4 x tilting rollers - 40 t each 2 x retractable motorized (line feeders) 1 x adjustable track support (between tensioners) 40 t
Firing line supports	3 x adjustable track support (with load monitoring) 75 t each
Main line Welding stations	4
Piggy-back Welding stations	3
NDT station	1
Repair station	1
Field joint stations	2
Davits	5 x 50 t each
Stinger	60 m with 6 x 60 t tilting rollers (with load control)





MOORING EQUIPMENT

Anchor winches	10 x Electro - Hydraulic with controlled drag-brake pay out 2 x 100 t Single drum with 2.000m Ø 52mm cable
FWD	4 x 75 t Single drum with 1.700m Ø 48mm cable
AFT	4 x 75 t Single drum with 1.700m Ø 48mm cable
Anchors	10 x 10 t Delta flipper

COMMUNICATION EQUIPMENT

GMDSS	Furuno GP37
V-SAT	Sailor 500/250
TV-SAT	C Band + KU Band; SeaTel 9497 - 94"
	Sailor TT-10202
Inmarsat	Sailor H2098B

NAVIGATION EQUIPMENT

Radar	1 Recal Decca 65614 1 Recal Decca CAA 65495/AA 1 Observator 572068
Magnetic compass	1 Decca Arkas
Echosounder	Jhc F-840
Autopilot Navitron	MT 921G 2 Jrc Nwz 4570
GPS	1 Furuno GP 50 Mark 2

ACCOMMODATION

During last rebuilding in 2011 a modern accommodation module was built and fitted to comply with the latest standards of Safety and Comfort and is comprising of:

5 x 1 man suite	
13 x 1 men cabin	
70 x 2 men cabin	
23 x 4 men cabin	
	Total: 250 pax
Hospital	1 x 5 bed 1 x 1 bed (isolated) + 1 x 1 Infirmary
Messroom	1 x 112 seats
Tv Room	50 seats
Internet Point	8 desks 55 seats (no smoking area)
Recreation & Relax Room	20 seats (smoking area)
Meeting Room	20 seats (fully equipped) 7 desks - Project engineers
Project Office (fully equipped)	1 desk - Superintendent in separated office 5 desks - Project engineers 1 desk - Client representative
Client Office	In adiacent separated office
Gymnasium	32 m2

HELIDECK

Helicopter max rating	9.3 t
Class	H2
Helideck dimension	22.2 x 22.2 m (octagonal)





MICOPERI

CLYDE

IMO 7645519

EMINOLE
ENNA

HEAD OFFICE

Via Trieste 279
48122 Ravenna IT
tel +39 0544422252
fax +39 0544423767
info@micoperi.com
www.micoperi.com

